

# THE IMG ACADEMY EXPERIENCE

BOARDING SCHOOL HOUSING AND CAMPUS GUIDE

## THIS IS LIVING

IMG Academy's Ascender Halls and Recreational Area were designed to ensure each student-athlete feels at home. Natural social gathering spaces and renowned sport courts as well as designated study rooms provide the ideal balance between athletics, academics, and student life. This tropical oasis in the heart of campus truly redefines the boarding school standard.

## THE BOARDING EXPERIENCE

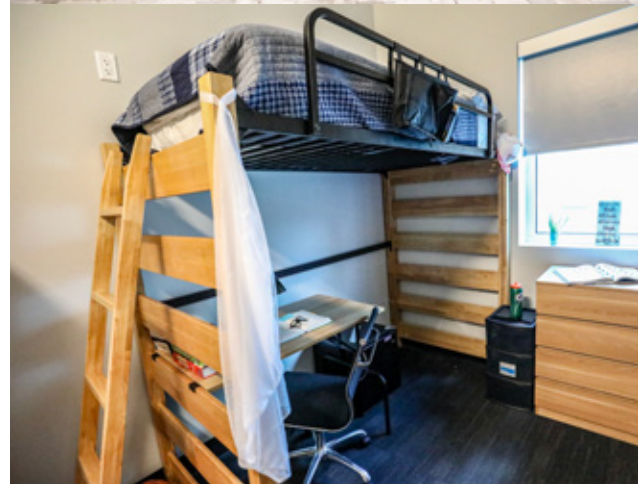
- Three residence halls (Ascender East, West, and South) with 650+ rooms and five total layout options
- Furnished with bunk-style beds, desks, bathroom, wardrobe and full room cleaning once per week with trash removal twice/week
- Recreational room, common area, snack shop, mail room, study rooms, washer/dryer units on every floor, and in-room wi-fi connections

## LAUNDRY PACKAGES

IMG Academy offers student-athletes laundry service options for convenience:

\$1,449 / year

\$849 / semester





# LIVING OPTIONS

## ASCENDER HALL - STANDARD

### The Huddle

The Huddle is shared living at its finest! The two bunk beds/desk layout allows student-athletes to comfortably live with his/her roommate. Sized at 11'x20', the Huddle also features a full bath, room for additional seating and shelving in addition to access to Ascender Hall's amenities and conveniences.



## ASCENDER HALL - ENHANCED

### The Ace

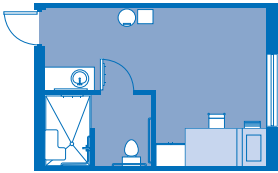
Sized at 11'x20', the Ace Room allows for on-campus housing at its peak! This layout, which mirrors that of The Huddle, allows for boarding student-athletes to live comfortably in their personalized, single residence hall room. Completely furnished with a bunk bed/desk, a full bath, and all of the additional seating and shelving options, The Ace creates an inclusive atmosphere available right from campus.

*\*Room layouts subject to change based upon availability of downstairs and upstairs units.*



### The Victory

As the third largest living option, Victory gives you the best of both worlds. Sized at 14.5'x20', the spacious layout features all of the benefits the Ace room has to offer. Take advantage of the additional space to add amenities and personalize your room.



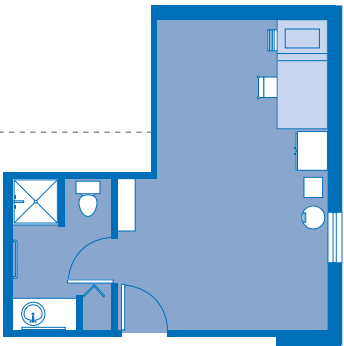
### The Championship

Championship is our second largest rooming option in Ascender Hall. Sized at 17'x11'6", the private room provides ample room for additional living space, in addition to its bunk-style setup and full bath.



### The Grand Slam

Hit a Grand Slam this year with our premier housing option available within the newly constructed Residence Hall. Sized at 20'x13'6", the Grand Slam layout is the largest living option for our student-athletes, providing an exclusive living area and enhanced bathroom design.



# LIVE WELL. STAY SAFE.

## RESIDENTIAL MENTORS

Residential Mentors promote a safe and positive living environment conducive to academic achievement, character development, personal growth, and all-around well-being.

Most importantly, our Residential Mentors are available 24 hours a day, 7 days a week. With two Residential Mentors assigned to each floor, they promote a positive living environment while uniting student-athletes.

## HEALTH SERVICES PROVIDED BY JOHNS HOPKINS

With a knowledgeable, compassionate team of nurses on duty 24 hours a day to assist, Health Services provides support to student-athletes for any type of medical issue. Provided by Johns Hopkins All Children's Hospital, Health Services can also help student-athletes by distributing prescription medication at designated times to ensure safety and proper dosage.

If advanced medical care is necessary, an appointment can be scheduled with our on-campus medical provider. If a referral to a specialist is recommended, the Health Services team will provide assistance by scheduling appointments and transportation.

## CAMPUS SAFETY

Our Campus Safety team is dedicated to monitoring campus and ensuring that students, campers, and all other guests feel safe at all times. The oversight and supervision provided by our Campus Safety team as well as our teachers, coaches, and Campus Life staff ensures that everyone feels comfortable and secure during their time on campus.

Our team provides 24/7 security at both of our campus guard gates, as well as campus patrol. Access to many areas on campus require an active employee, student, or guest ID, which are activated by an employee upon check-in or enrollment.

## SPORTS THERAPY

Our team of certified athletic trainers help oversee the evaluation and treatment of each one of our student-athletes, reducing the potential of injury and promoting continued good health through massage, physical therapy, and corrective exercises. This includes:

- Sports Therapy Evaluation
- Injury Prevention Education
- Proactive Rehabilitation
- Injury Management







# LEGACYHOTEL

AT IMG ACADEMY

Located just steps from campus, Legacy Hotel is a lifestyle boutique hotel offering world-class accommodations and unmatched convenience for families visiting IMG Academy. Relax with a treatment in the Wellness Spa, rejuvenate by the resort-style pool, then connect over a freshly prepared meal at Icon Eatery & Bar while you enjoy your time on the Gulf Coast.

VISIT [WWW.IMGLEGACYHOTEL.COM](http://WWW.IMGLEGACYHOTEL.COM) OR CALL US AT 1-866-300-4534 FOR MORE INFORMATION AND TO BOOK YOUR STAY.



Shop IMG features dorm essentials and items such as bedding, towels, accessories, and more for student-athletes that will make them feel comfortable and at home.

SEE ALL OF THE AVAILABLE PRODUCTS ON [SHOPIMG.COM](http://SHOPIMG.COM).



5650 Bollettieri Blvd., Bradenton, FL 34210

P: 1 800 872 6425 / F: 941 752 2531

[imgacademy.com](http://imgacademy.com) / [admissions@imgacademy.com](mailto:admissions@imgacademy.com)